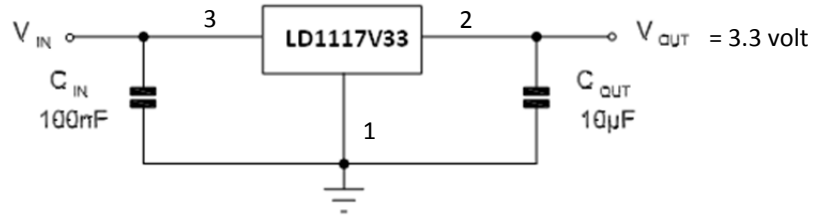


Extra voeding 3.3 volt

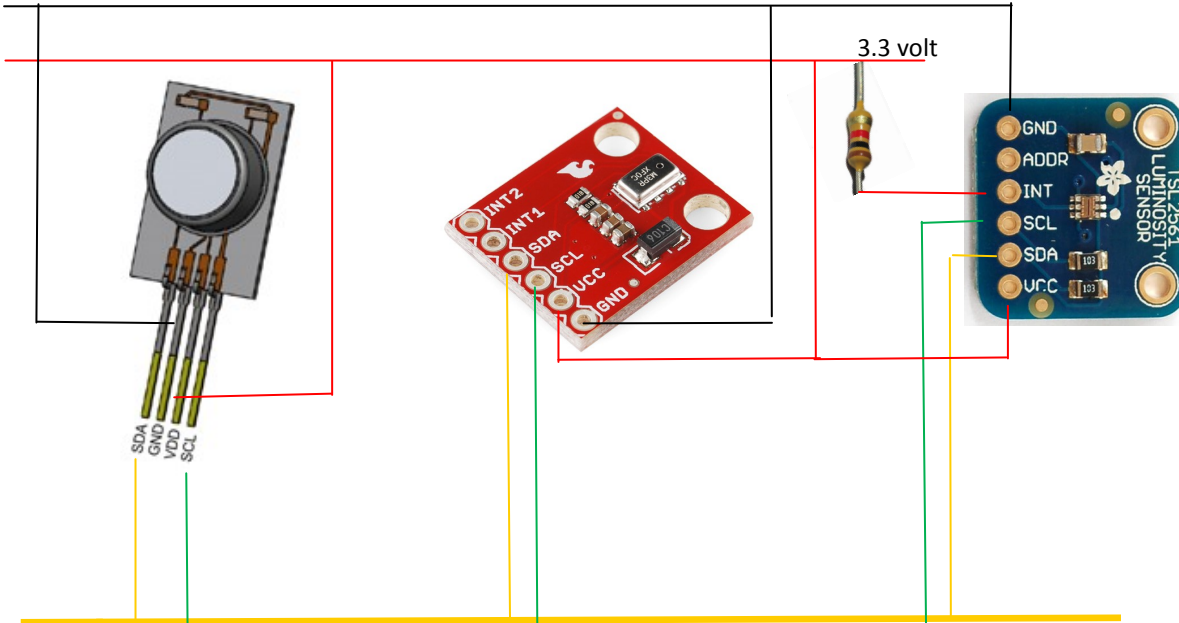


HYT 221 Humidity

T5403 barometric sensor

TSL2561 luminosity sensor

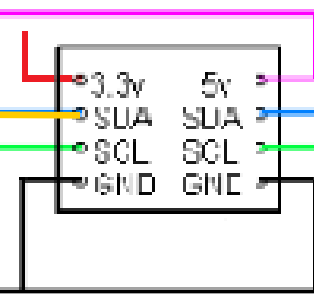
Ground



SDA

SCL

5 V van Pi naar LD1117V33



Level convertor 3,3 <> 5 V
BOB-12009



LCD display 1602, I2C, 5 V
16 characters, 2 regels

GPIO Raspberry Pi

- pin1 = 3.3 v
- pin2 = 5 v
- pin3 = GPIO0 (SDA)
- pin5 = GPIO1 (SCL)
- pin6 = Ground

